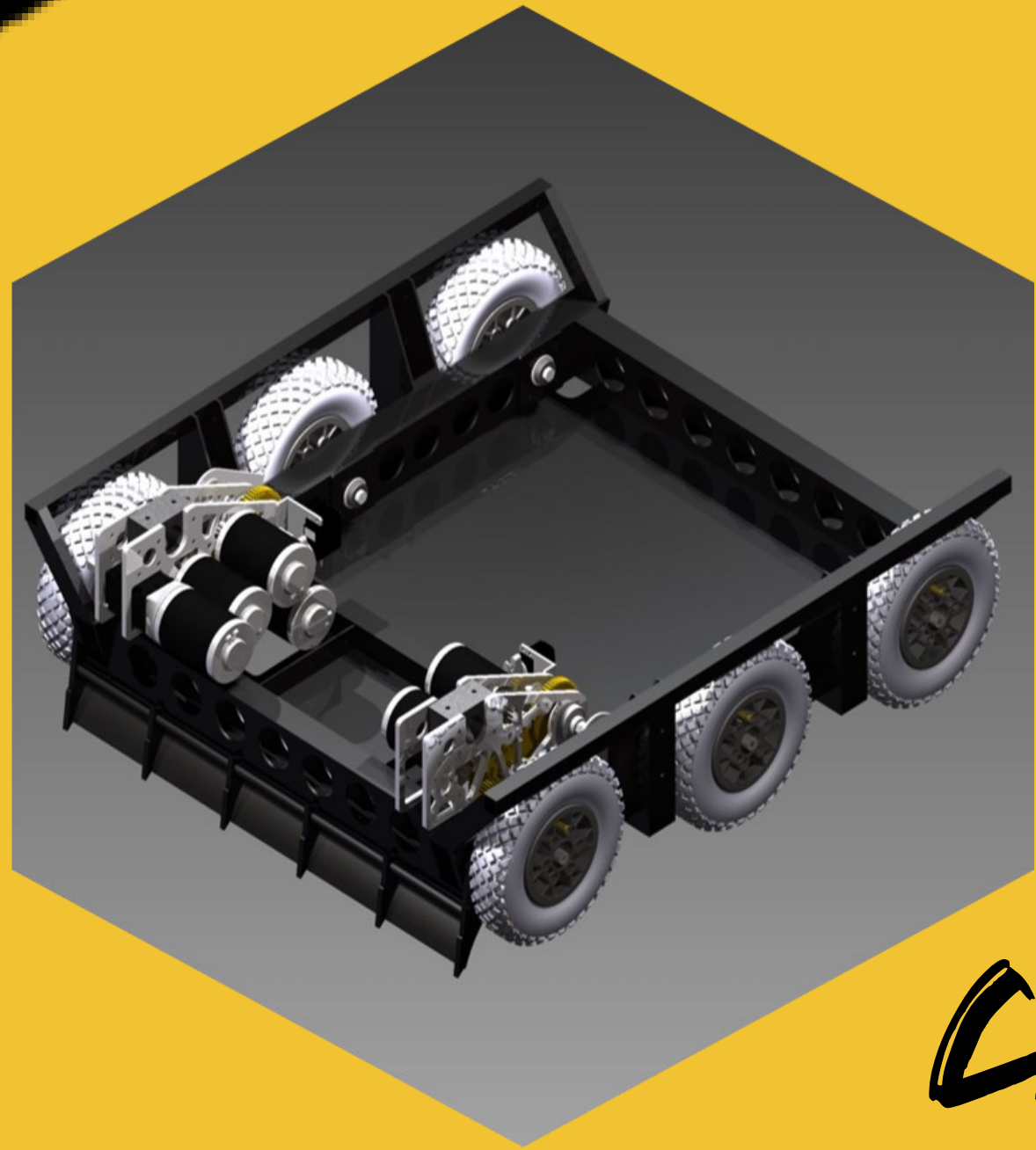
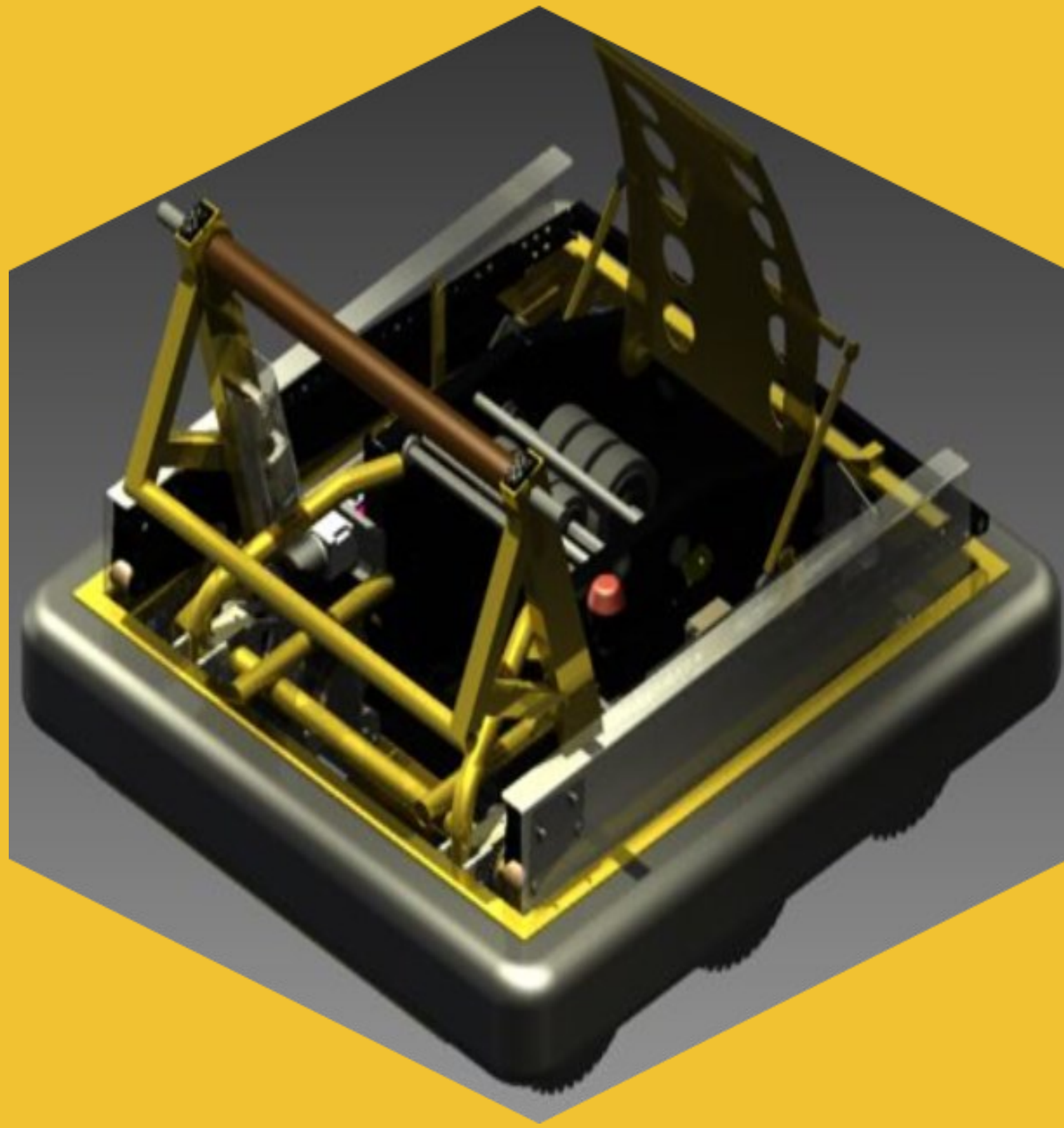


BLIZZ XXI



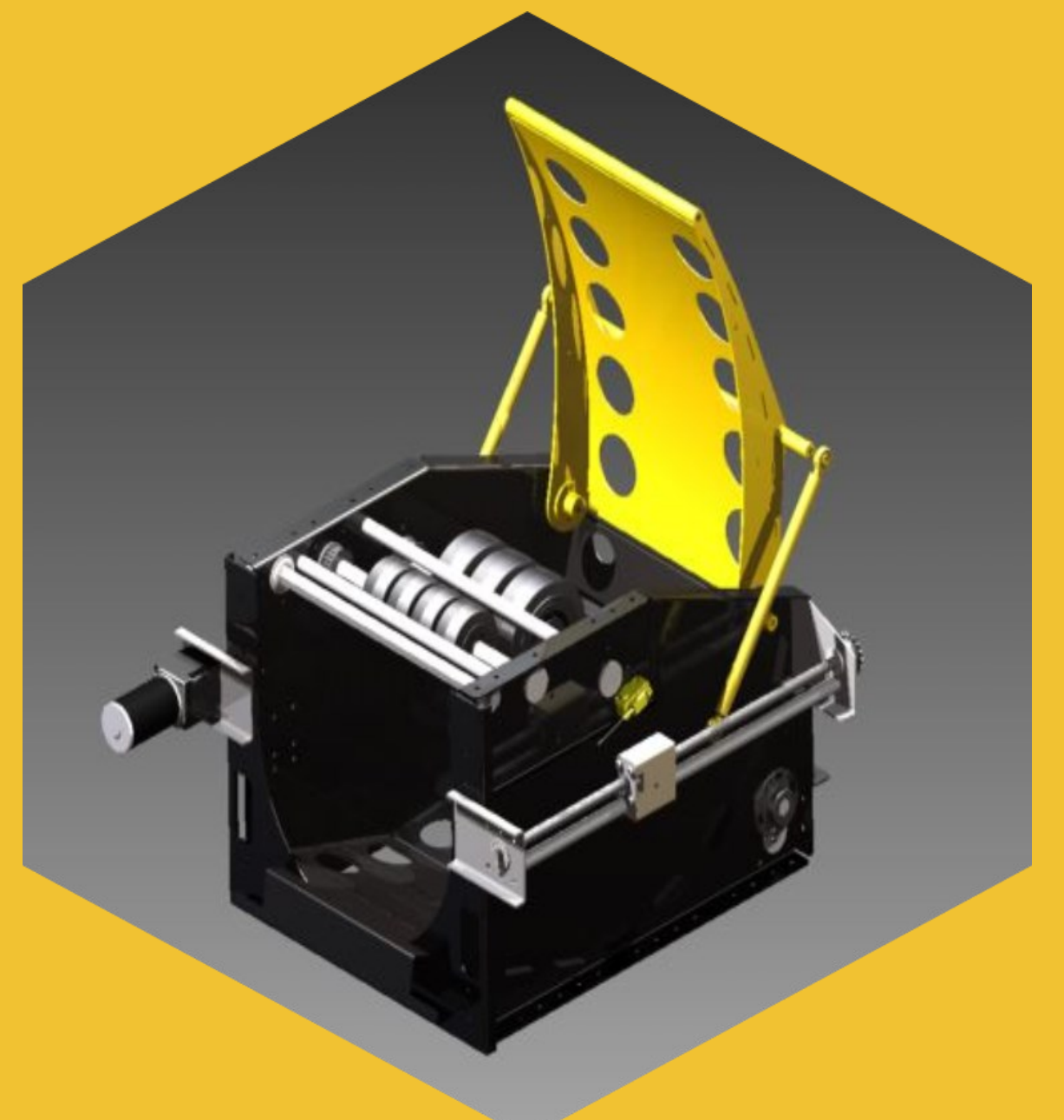
CHASSIS

- . Chassis dimensions 27" x 29"
- . 6 Mini CIM drive geared for 13 ft/sec
- . Actively Cooled Mini CIMS using hollow bolts with pneumatic tubing.
- . Six 8" modified, foam filled wheels optimizes weight and shock absorption.
- . Rigid 1/8" reinforced sheet metal snowplow to assist crossing



SHOOTER

- . 1/16" aluminum sheet metal water jetted parts for hood and structure
- . 775pro 3:1 Versaplanetary gear reduction for two lead screws with ball joints for hood adjustment
- . Feeder axle with BAG motor 20:1 with 90 degree Dewalt adapter
- . Main axle using one CIM with pulley ratio 44:20 with three 3" x 7/8" Colson wheels and two 4" aluminum toning wheels used for RPM detection, inertia, and balancing
- . Secondary axle chained to middle axle using 2:1 reduction with four 2.5" x 1.25" Colson wheels



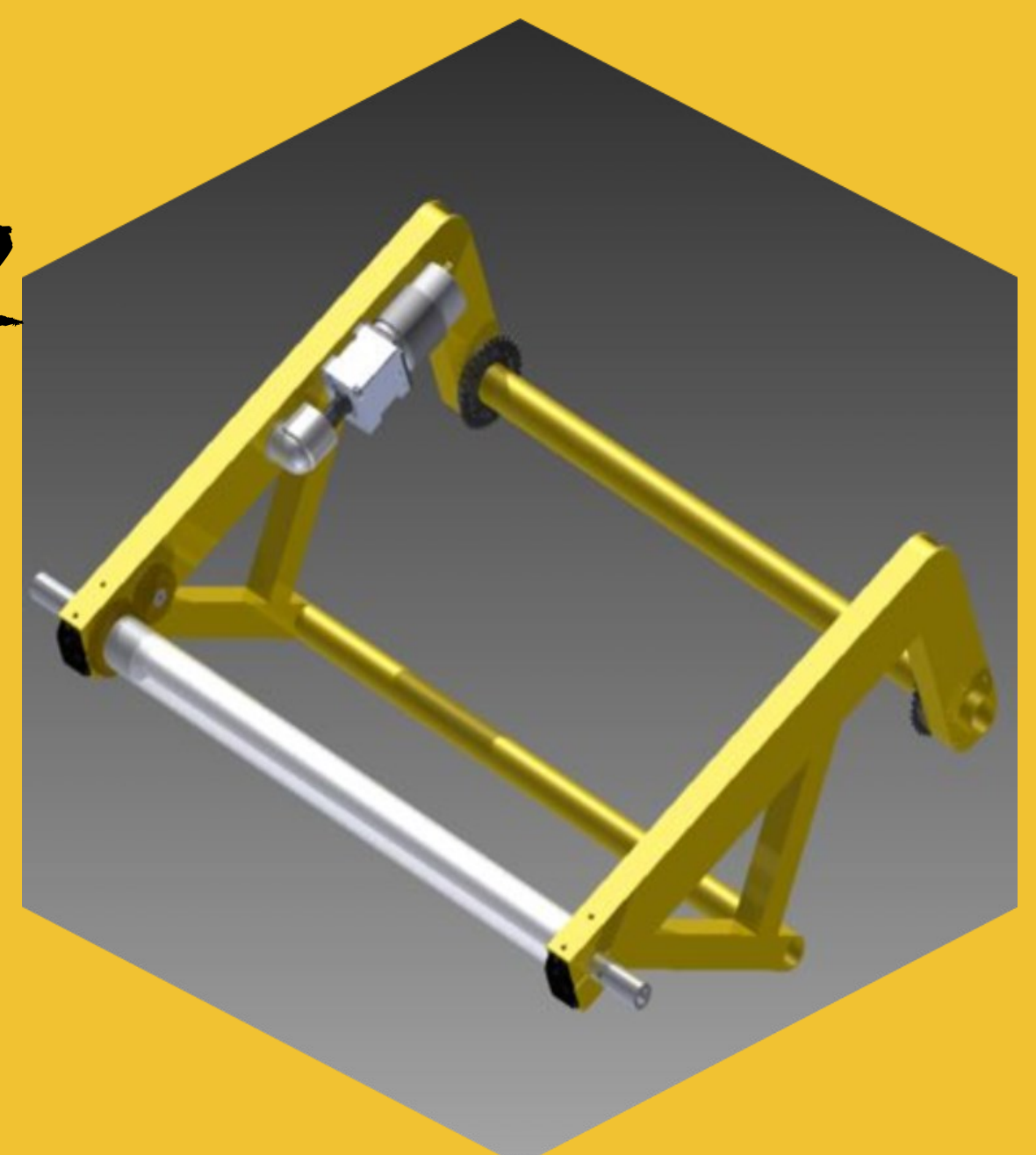
HANGER



- . Four bar powered by bungee deployed when released by a servo powered latch.
- . Three stages telescoping arm powered by constant force springs that are held in place by a Delrin bracket
- . Deployed by removal of pins as four bar lifts upward
- . Crossbar and hoods are made to fit around bar rather than grabbing the bar
- . 3/16" winch string that runs through the telescoping arm tubes, engaged by a PTO from the drivetrain

COLLECTOR

- . Mini CIM 75:1 Versaplanetary chained to 2:1, resulting in a 150:1 reduction
- . Roller is a 1.25" tube with gum rubber motivated by a 775pro with 9:1 Versaplanetary gearbox with 90 degree Dewalt adapter
- . Inside the tube, it is 40:30 gearing, resulting in a 12:1
- . Three 2" black belts connecting to the floating roller



KILLER BEES

